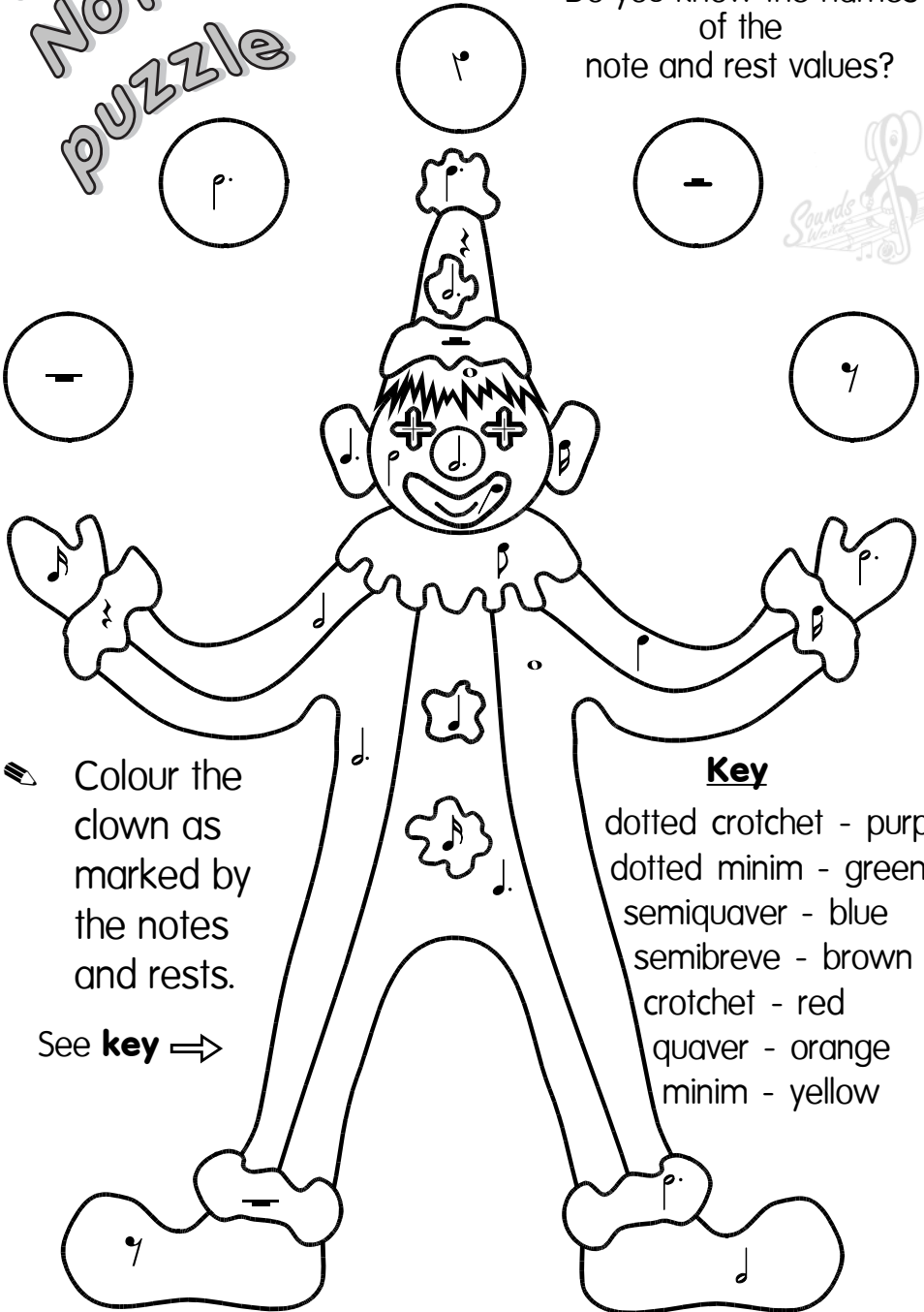


# 1 Note puzzle

Do you know the names of the note and rest values?



Colour the clown as marked by the notes and rests.

See **key** ⇒

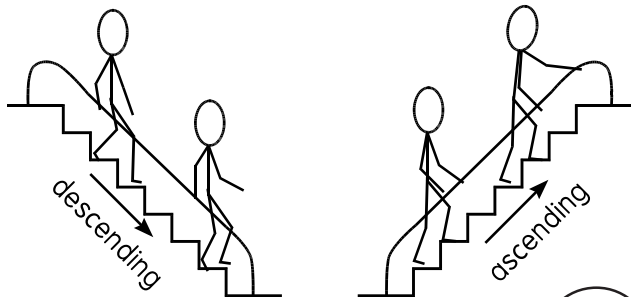
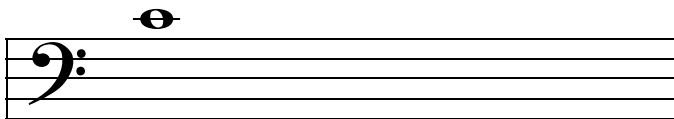
## **Key**

- dotted crotchet - purple
- dotted minim - green
- semiquaver - blue
- semibreve - brown
- crotchet - red
- quaver - orange
- minim - yellow

- Write a C major scale **descending** (going down).

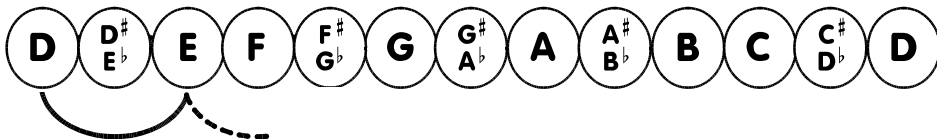
Use **semibreves**. Bracket semitones.

D major 14



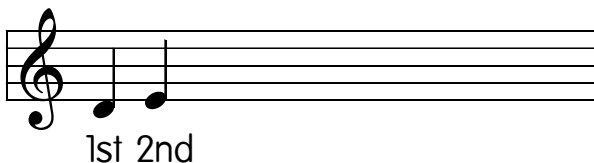
- What is the tonic of D major?

- Work out the notes of D major using T T S etc.

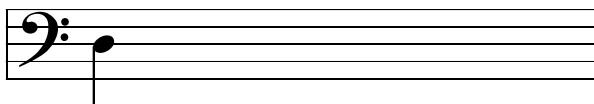


- Write the scale of D major **ascending**. Use **crotchets**.

- Write the number of degrees of the scale under each note. The first is started for you.



You only need to count to 7. When you get to 8, it is the same as 1 again. (D will always be the 1st degree of D major.)



The top note D in bass clef is written 